

BeWhere tool: optimal technology, location & capacity of bio-energy production plants

Sylvain Leduc and many more

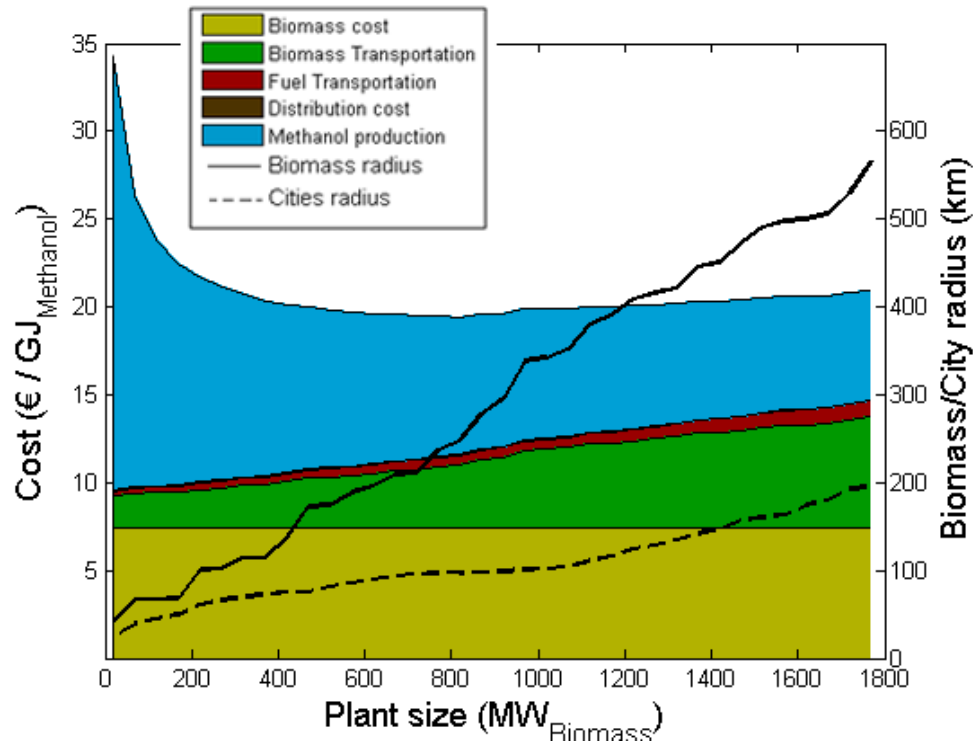
International Institute for Applied Systems Analysis (IIASA)



S2Biom Summer School
17-20 May 2016



- **Background**
- **Model description**
- **Case studies**
- **Visualization**
- **Wrap up**
- **Questions?**



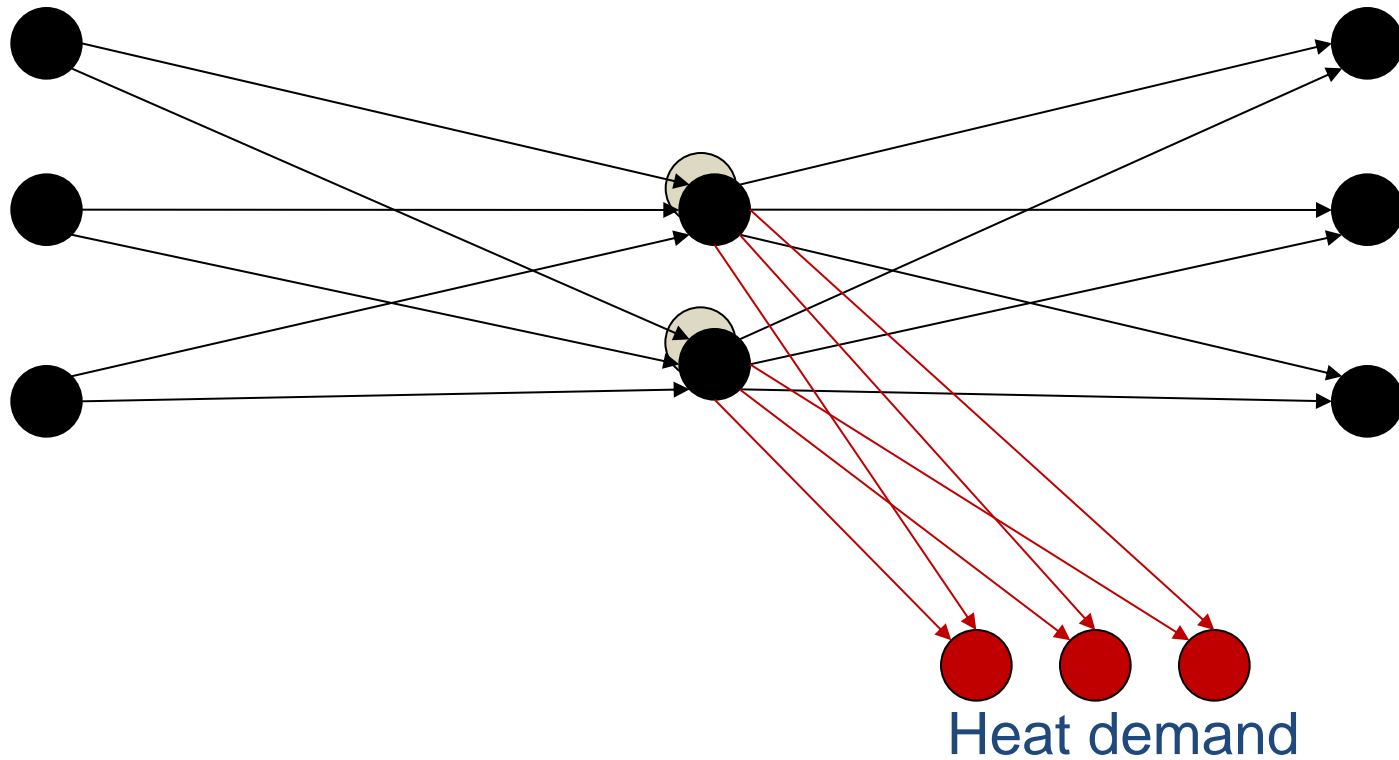
- **Competitive costs to compete against fossil fuel**
- **Large production plants**
- **Logistic problems**
- **Location and size of the production plant is an issue**

Source: Leduc et al. Methanol from gasification using a geographically explicit model. *Biomass and Bioenergy* 2009, 33 (5): 745-751.

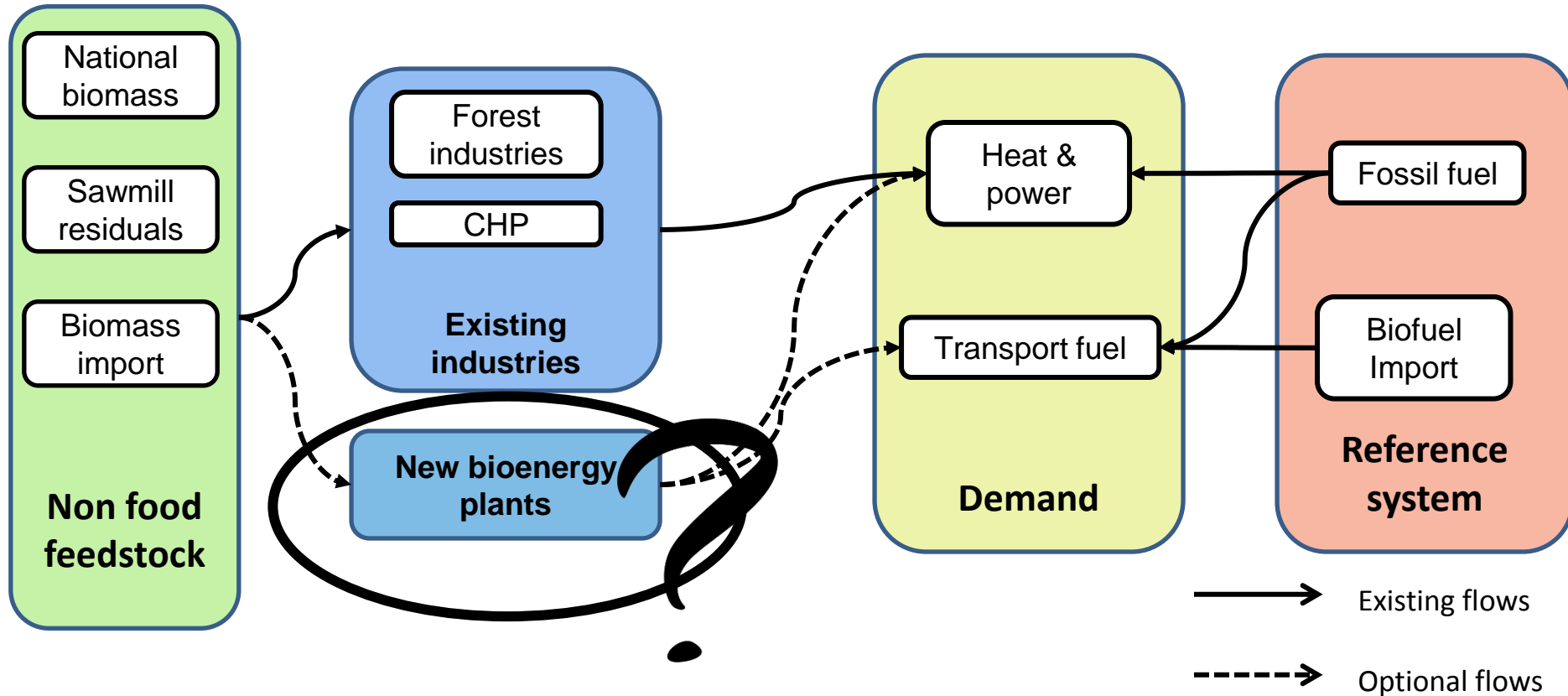
Biomass
supply

Production
site

Energy
demand



Supply chain



- Techno-economical model
- Mixed integer linear program
- Spatially explicit - 0.2 ° to 0.5° grid cell
- **Static** - yearly basis, with fluctuation of heat demand over the year
- Minimize the total cost of the whole supply chain for the region's welfare

$$\min [\text{Cost} + \text{Emissions} * (\text{Carbon Tax})]$$

- Does not maximize the profit of a plant



- Biomass

- Location
- Availability
- Collecting cost

- Existing industries

- Location
- Feedstock demand
- Power/heat output

- Production plants

- Type of biomass
- Biomass need
- Economic parameters
- Conversion efficiency

- Transport

- Type of transport per feedstock
- Costs
- Emissions

- Demand

- Location
- Heat / power / transport fuel
- Price of competing fossil fuel
heat / power / transport fuel

- Policy in place

- Carbon cost
- Biofuel support
- Subsidies

(1) Number

(2) Technologies

(3) Size

(4) Locations



Policy tool

Costs

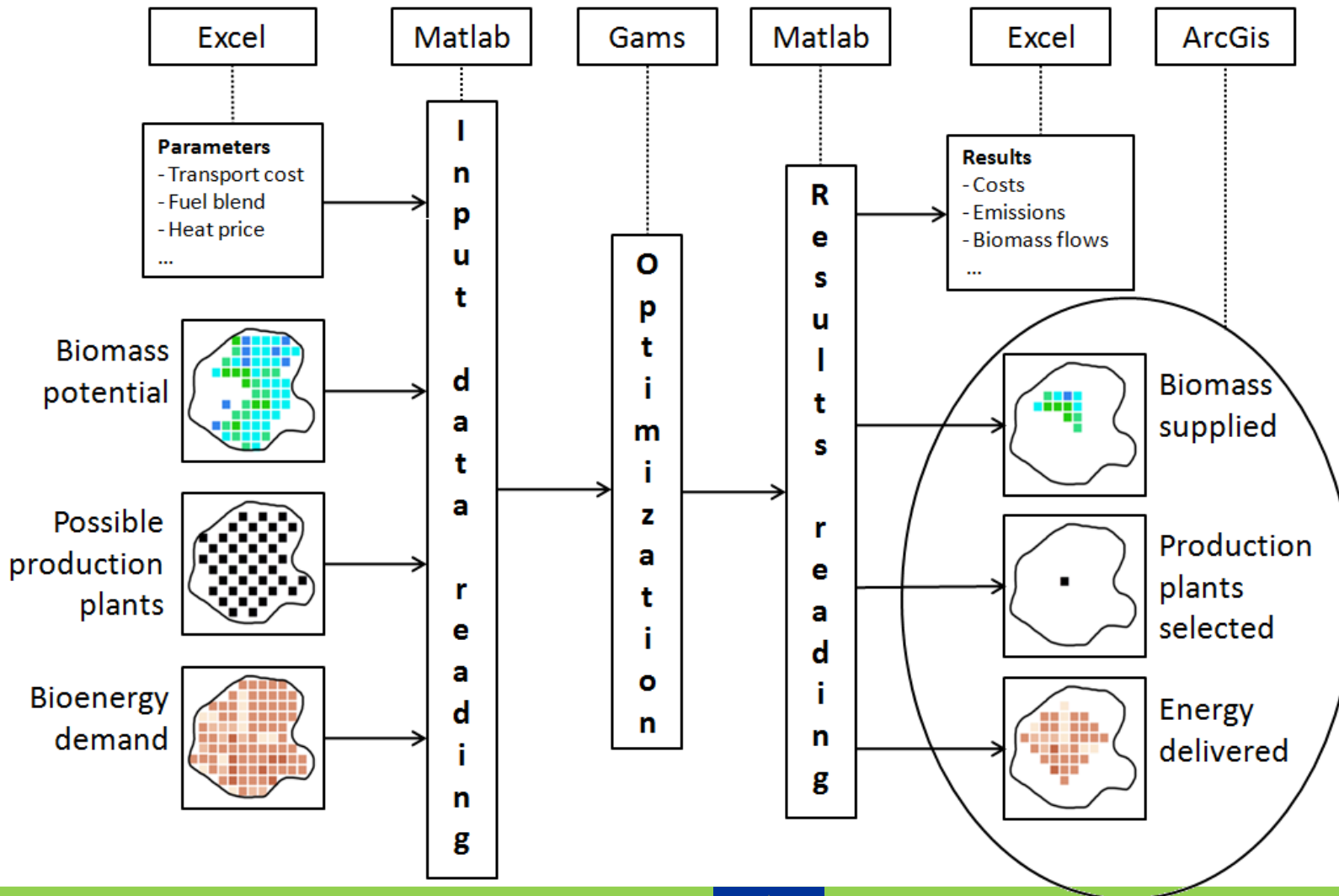
Emission avoided

Direct emissions

Economic potential

Trades

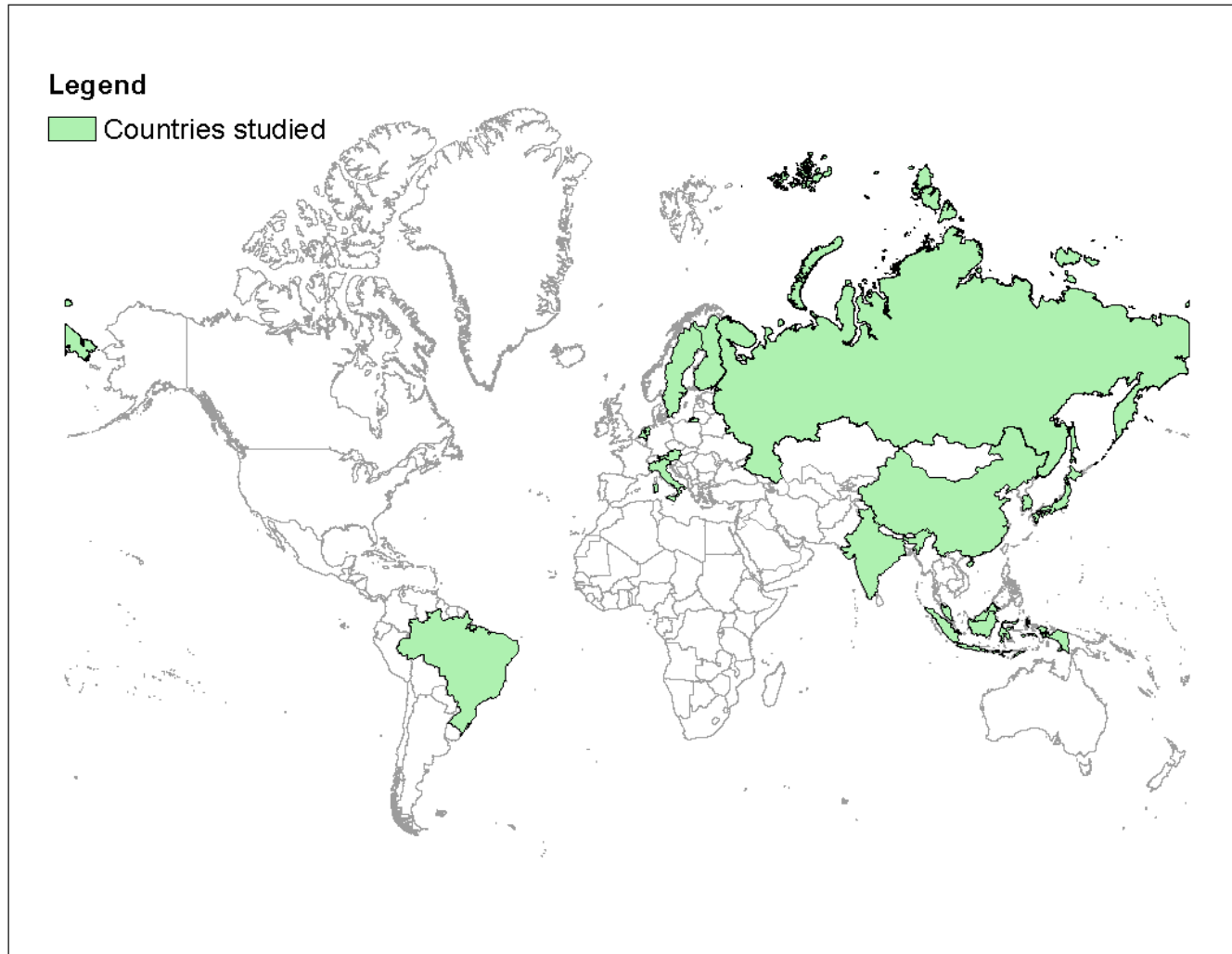
Methodology



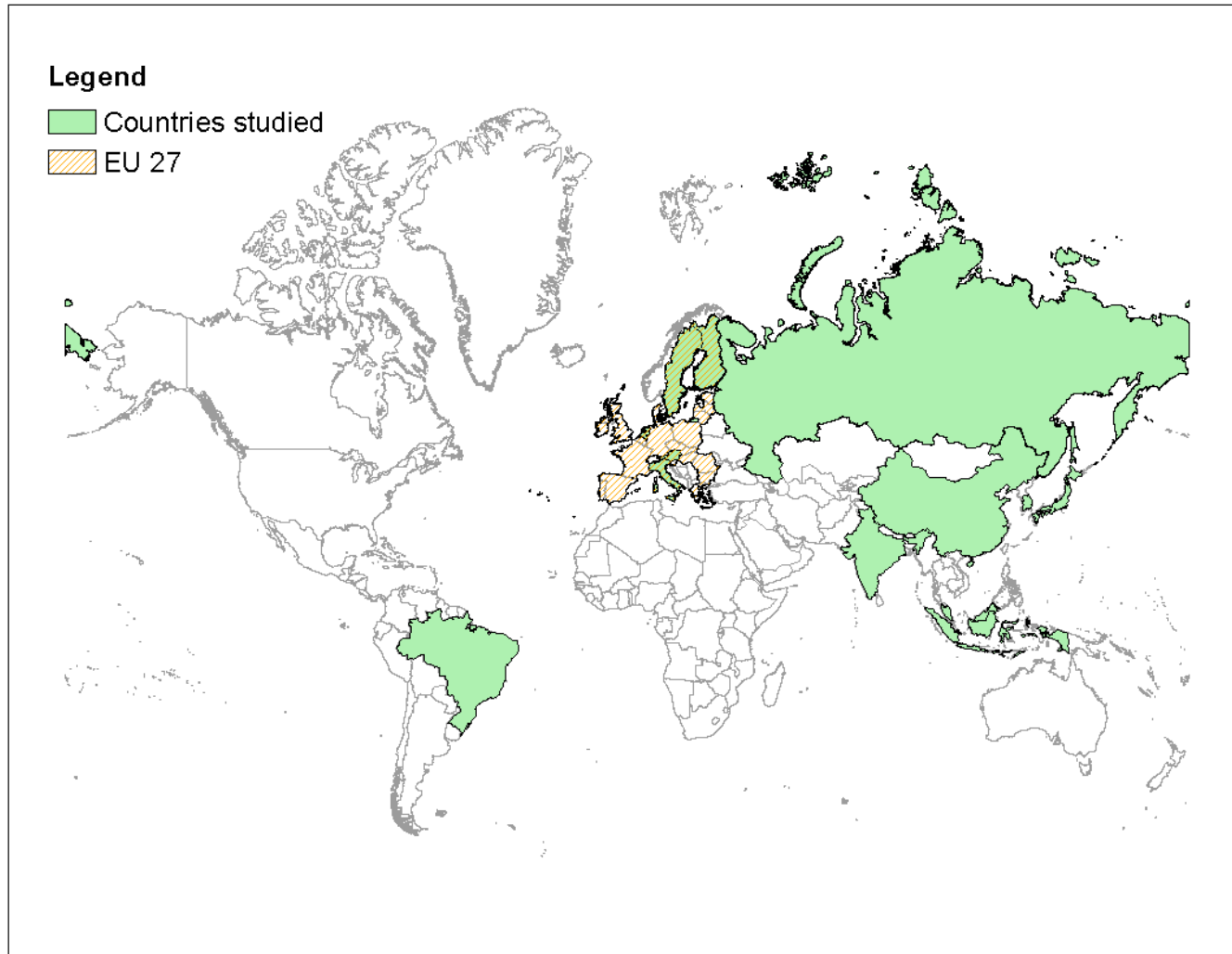
The BeWhere Umbrella



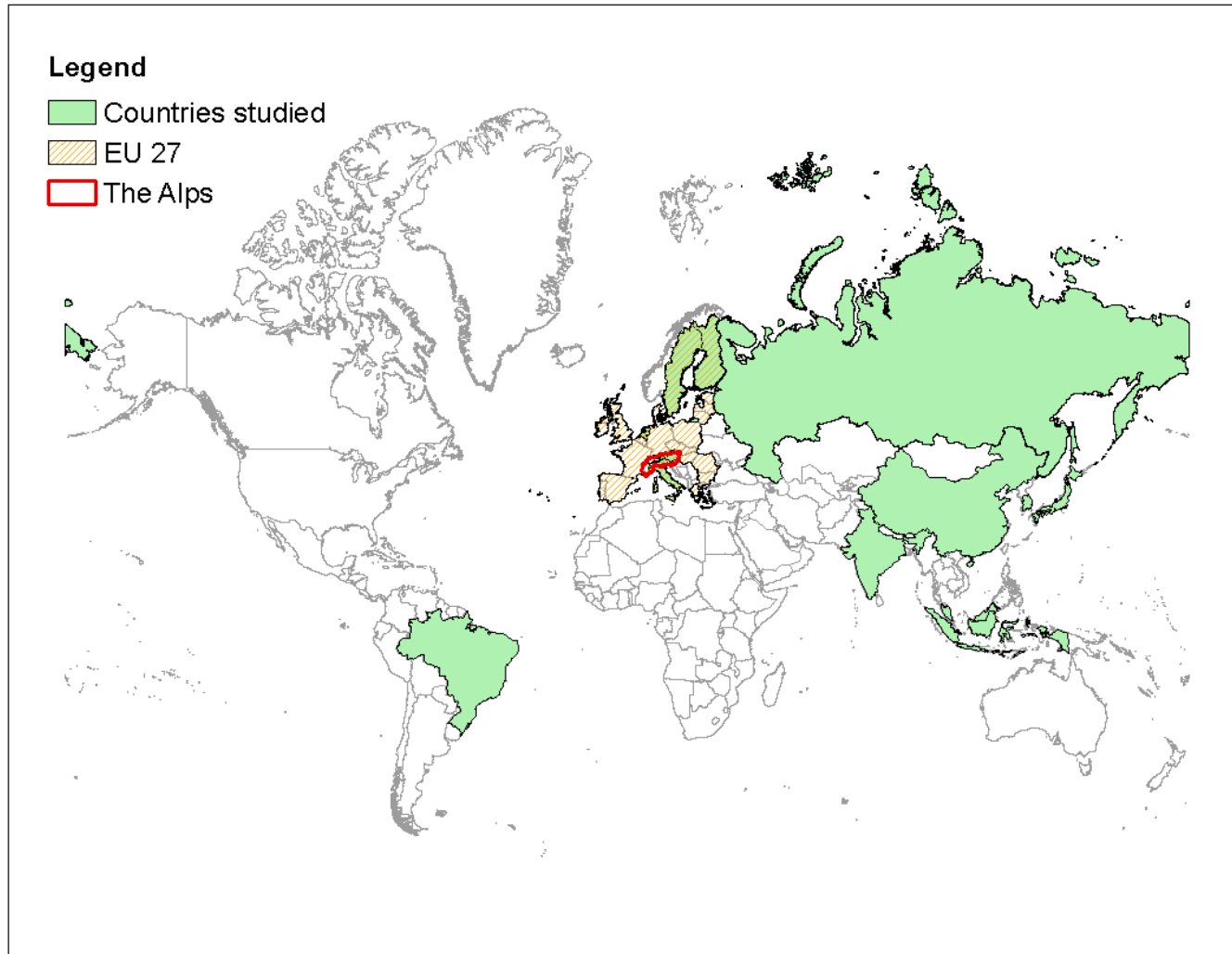
BeWhere Applications



BeWhere Applications



BeWhere Applications



- **BeWhere**

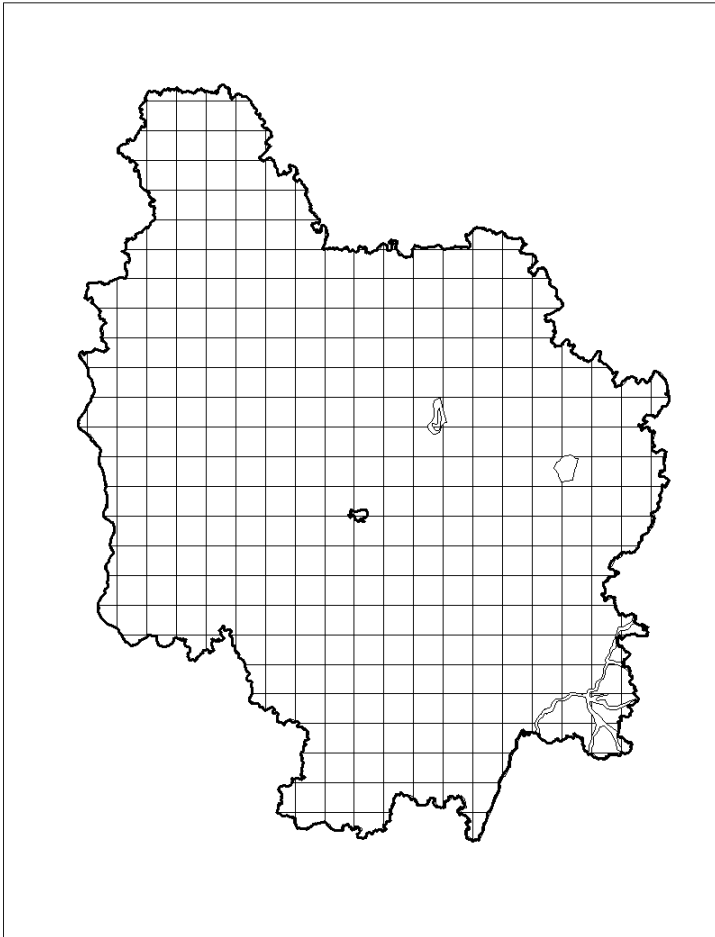
- Supply chain optimization
- National level
- Rough grid
- Determine the optimal geographic location of production plants

- **LOCAgistics**

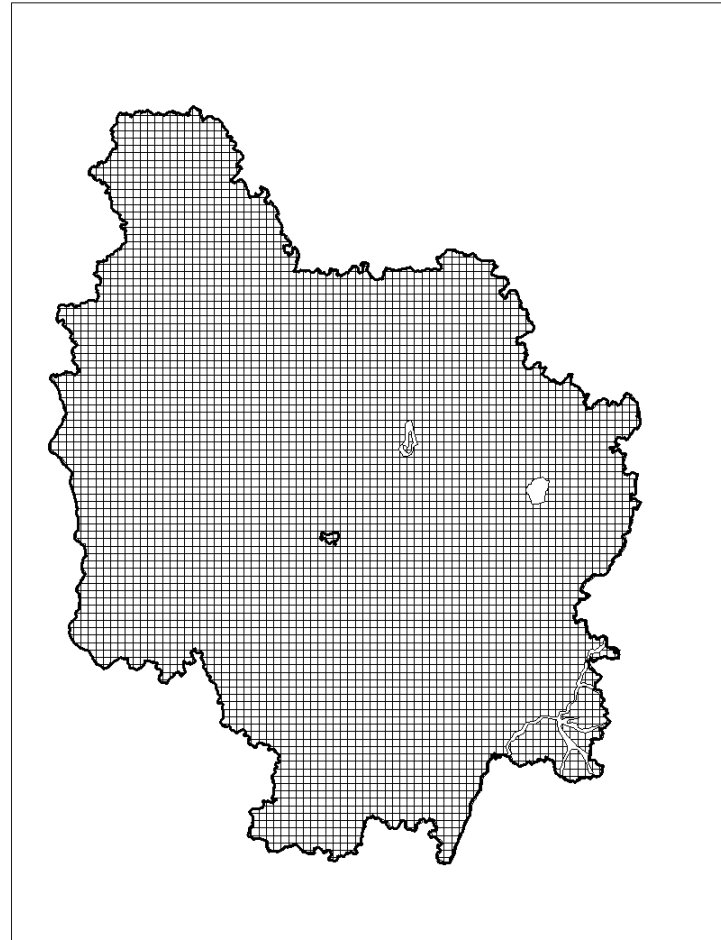
- Supply chain simulation
- Regional level
- Finer grid
- Use the plant location optimized from BeWhere

Burgundy case study

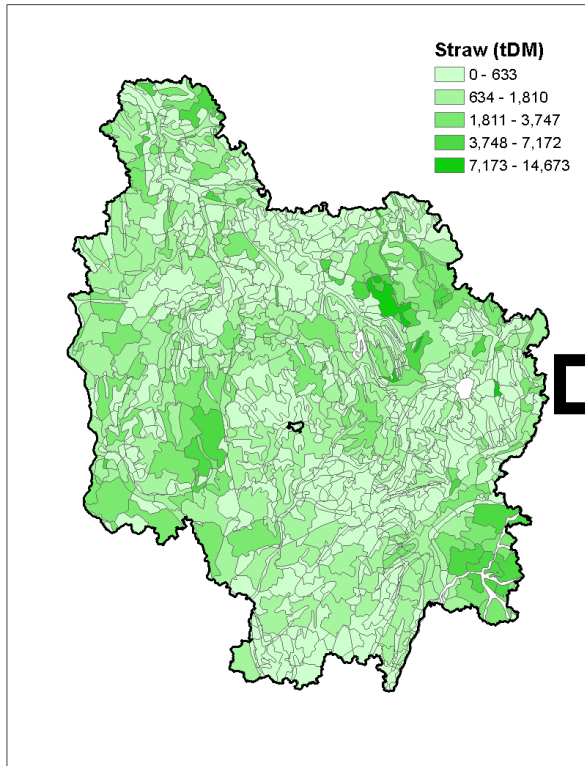
BeWhere 377 grid points



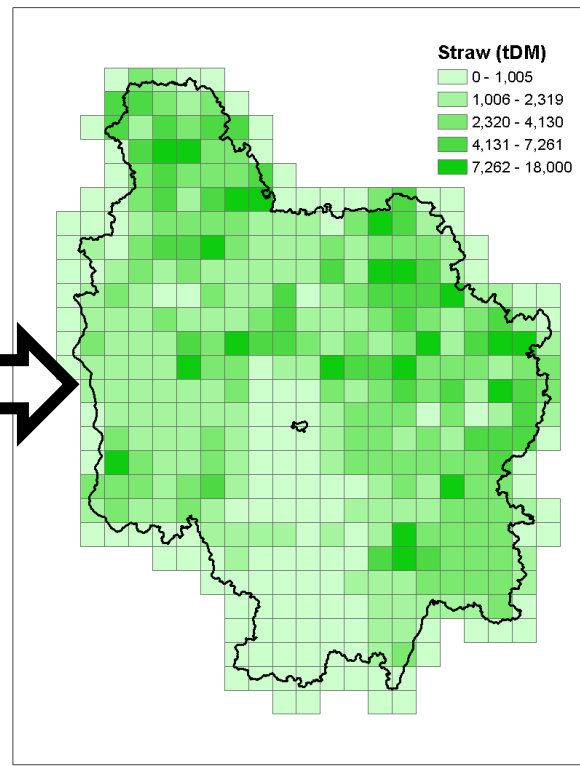
LOCAgistics - 5,357 grid points



Straw availability



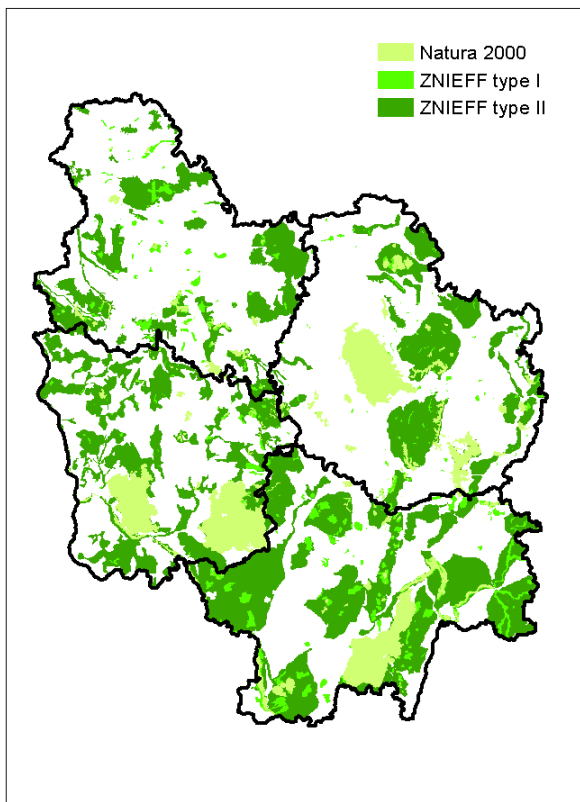
Aggregation



Input

- Biomass available
- Biomass cost
- Emissions

Source: INRA



Source:
Inventaire National du Patrimoine Naturel
European Environment Agency (EEA)

ZNIEFF: Natural Areas of Ecological Fauna and Flora Interest

- type I: areas of great biological or ecological interest
- type II: large, rich and slightly modified natural landscapes, providing significant biological potential

Assumptions for Natura 2000 areas

- No extraction of biomass
- No power plants can be installed

Input: technology

<i>Key parameters</i>	<i>Unit</i>	<i>Methanol^{a, b}</i>
Feedstock		Wood chips
Base plant capacity	$t_{\text{biomass}}/\text{hour}$	357
Cost		
Base investment	M€/a	505
O&M	M€/PJ _{biofuel}	1.2
Efficiencies		
Total	$\text{GJ}_{\text{in}}/\text{GJ}_{\text{out}}$	0.66
Biofuel	$\text{GJ}_{\text{biofuel}}/\text{GJ}_{\text{biomass}}$	0.55
Electrical	$\text{GJ}_{\text{electricity}}/\text{GJ}_{\text{biomass}}$	0
District heating	$\text{GJ}_{\text{heat}}/\text{GJ}_{\text{biomass}}$	0.11

^a Hamelinck, et al., 2002.

^b Wahlund, et al., 2004.

Input: technology

<i>Key parameters</i>	<i>Unit</i>	<i>Methanol^{a, b}</i>	<i>Ethanol^c</i>
Feedstock		Wood chips	Wood chips
Base plant capacity	$t_{\text{biomass}}/\text{hour}$	357	105
Cost			
Base investment	M€/a	505	143
O&M	M€/PJ _{biofuel}	1.2	2.5
Efficiencies			
Total	$\text{GJ}_{\text{in}}/\text{GJ}_{\text{out}}$	0.66	0.81
Biofuel	$\text{GJ}_{\text{biofuel}}/\text{GJ}_{\text{biomass}}$	0.55	0.30
Electrical	$\text{GJ}_{\text{electricity}}/\text{GJ}_{\text{biomass}}$	0	0.11
District heating	$\text{GJ}_{\text{heat}}/\text{GJ}_{\text{biomass}}$	0.11	0.40

^a Hamelinck, et al., 2002.

^b Wahlund, et al., 2004.

^c Barta, et al., 2010.

Input: technology

<i>Key parameters</i>	<i>Unit</i>	<i>Methanol^{a, b}</i>	<i>Ethanol^c</i>	<i>FT diesel^b</i>
Feedstock		Wood chips	Wood chips	Wood chips
Base plant capacity	$t_{\text{biomass}}/\text{hour}$	357	105	100
Cost				
Base investment	M€/a	505	143	67
O&M	M€/PJ _{biofuel}	1.2	2.5	2.9
Efficiencies				
Total	$\text{GJ}_{\text{in}}/\text{GJ}_{\text{out}}$	0.66	0.81	0.57
Biofuel	$\text{GJ}_{\text{biofuel}}/\text{GJ}_{\text{biomass}}$	0.55	0.30	0.45
Electrical	$\text{GJ}_{\text{electricity}}/\text{GJ}_{\text{biomass}}$	0	0.11	0.06
District heating	$\text{GJ}_{\text{heat}}/\text{GJ}_{\text{biomass}}$	0.11	0.40	0.06

^a Hamelinck, et al., 2002.

^b Wahlund, et al., 2004.

^c Barta, et al., 2010.

^d S2Biom

Input: technology

<i>Key parameters</i>	<i>Unit</i>	<i>Methanol^{a, b}</i>	<i>Ethanol^c</i>	<i>FT diesel^b</i>	<i>CHP^d</i>
Feedstock		Wood chips	Wood chips	Wood chips	Straw
Base plant capacity	t _{biomass} /hour	357	105	100	3.75
Cost					
Base investment	M€/a	505	143	67	0.63
O&M	M€/PJ _{biofuel}	1.2	2.5	2.9	1.75
Efficiencies					
Total	GJ _{in} /GJ _{out}	0.66	0.81	0.57	0.85
Biofuel	GJ _{biofuel} /GJ _{biomass}	0.55	0.30	0.45	-
Electrical	GJ _{electricity} /GJ _{biomass}	0	0.11	0.06	0.25
District heating	GJ _{heat} /GJ _{biomass}	0.11	0.40	0.06	0.60

^a Hamelinck, et al., 2002.

^b Wahlund, et al., 2004.

^c Barta, et al., 2010.

^d S2Biom

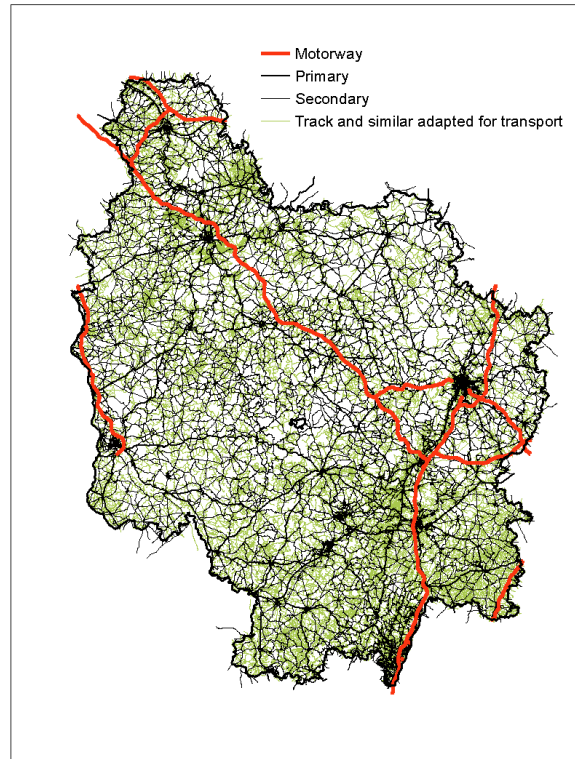
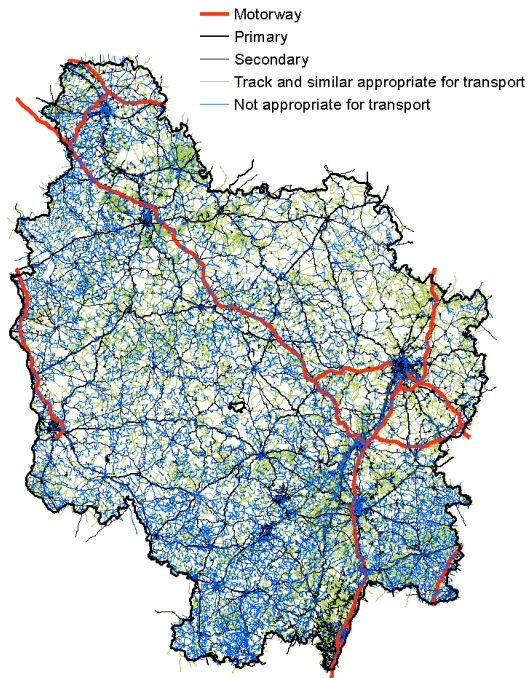
Technology	Operating hours hours/year	Investment cost MEUR	Heat MW _{th}	Power MW _e	Heat efficiency	Power efficiency
Fixed bed for CHP	7,200	0.2	0.1	0.05	0.5	0.23
Pyrolysis combustion engine (compression- ignition)	7,500	0.7	0.25	0.25	0.4	0.4
Fixed bed, direct combustion	8,500	2.5	5		0.88	
BFB for CHP	8,500	18	8	5	0.52	0.3
Grate boiler for CHP	8,500	25	10	5	0.6	0.25

Source: S2Biom, WP2

Road Network

Used road network

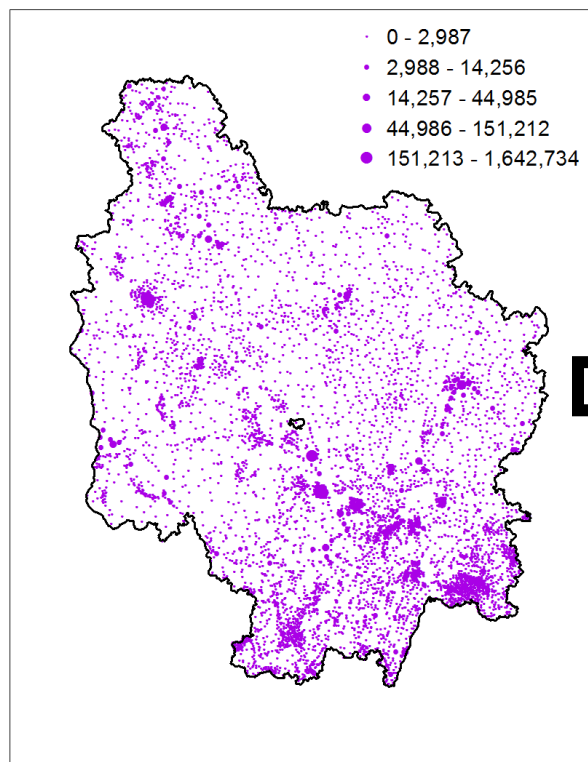
Input



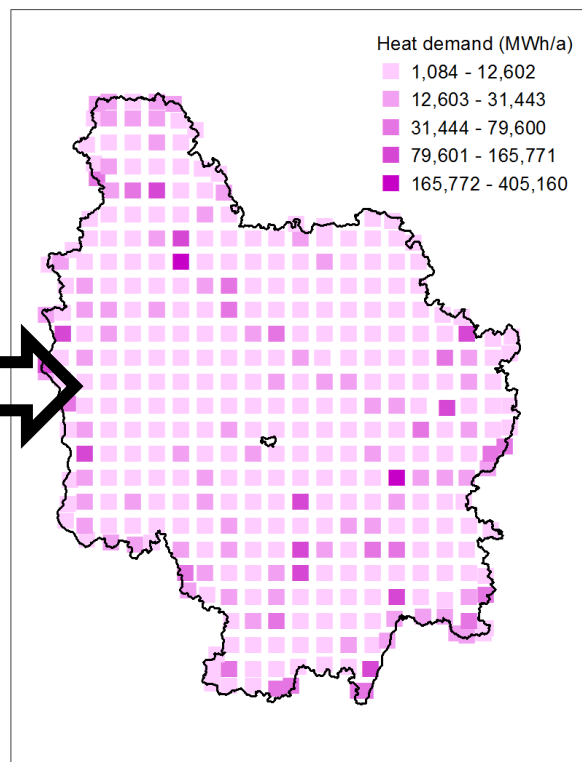
- Transport cost
- Emissions
- Terminals / pretreatment
- Distances from all points to all points based on $\text{Min}(t)$ or $\text{Min}(d)$

Source: OpenStreetMap.org

Population



Aggregation

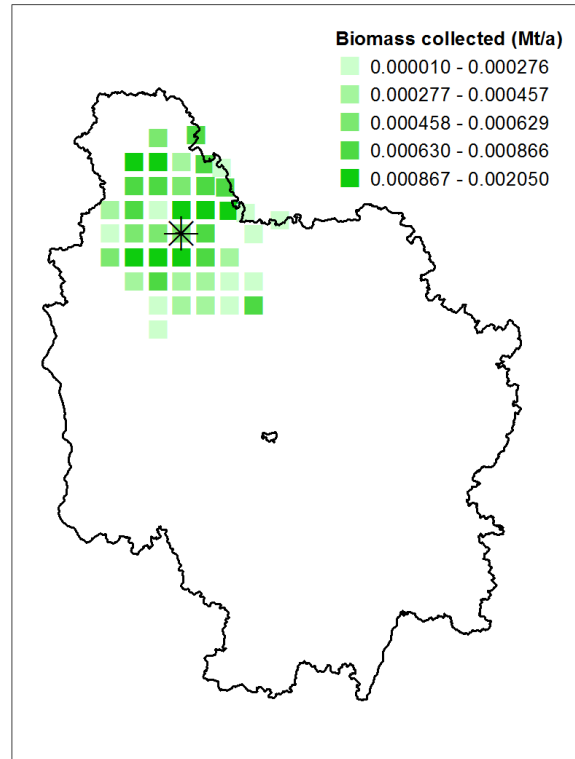
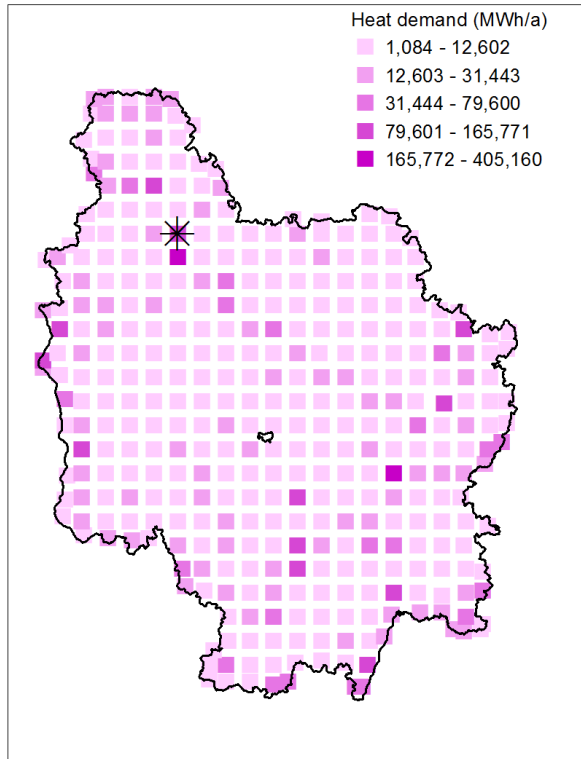


Input needed

- Heat consumption
- Power consumption
- Transport fuel consumption
- Price of competing
 - heat
 - power
 - transport fuel

Source:
OpenStreetMap.org
Réseau de Transport d'Électricité, www.rte-france.com

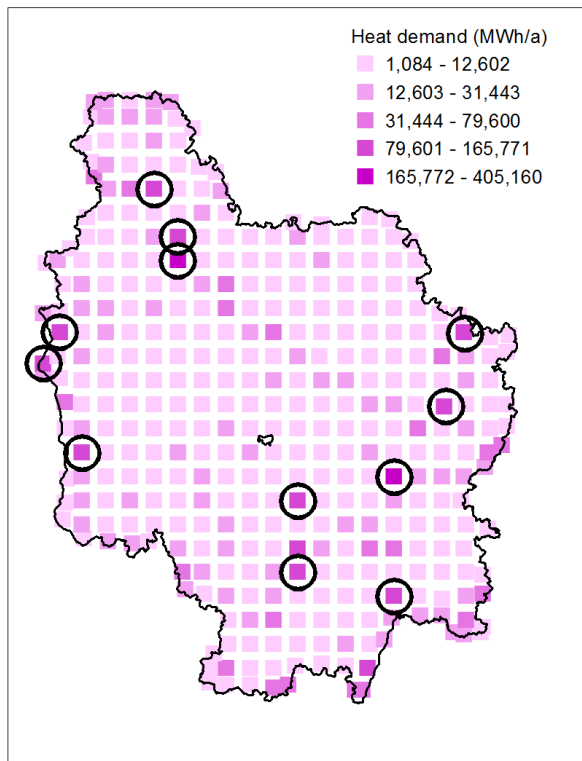
First plant



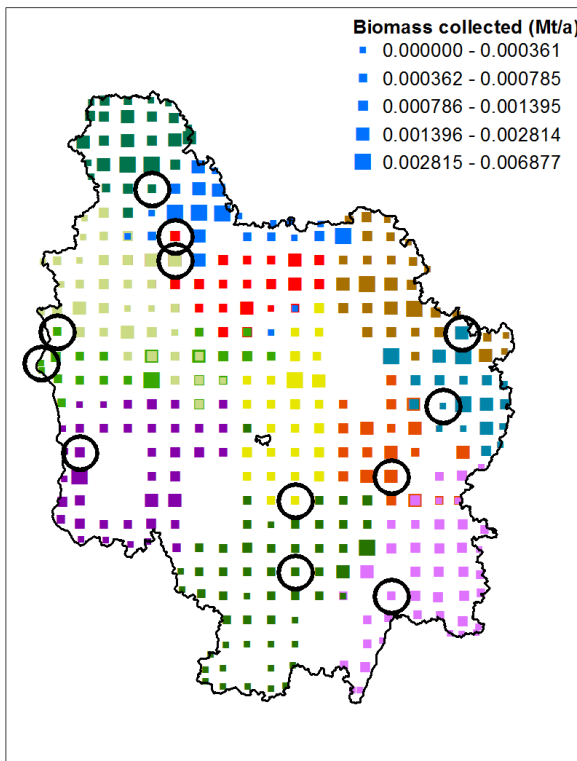
Radius (km)	65
Straw (t/a)	0
Miscanthus (t/a)	30,000
Power (MWh)	35,417
Heat (MWh)	85,000

Plant technology: Grate boiler for CHP
 Largest capacity
 Close to high heat demand

Maximize the fossil fuel substitution



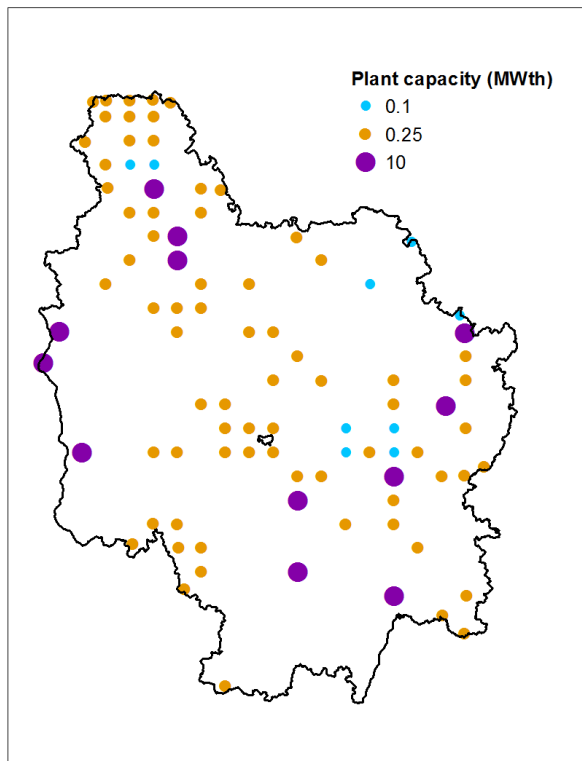
Plant technology: Grate boiler for CHP
 Largest capacity
 Close to high heat demand



Heat demand has stronger impact
 on the location than the
 distribution of biomass

	Min	Max
Radius (km)	70	158
Straw (kt/a)	6,5	20,5
Miscanthus (kt/a)	9,5	18,5
Power (MWh)	24,792	35,417
Heat (MWh)	59,500	85,000

Biomass available +25%



Capacity MWth	Radius km	Straw Mt/a	Miscanthus Mt/a	Power MWh	Heat MWh
10	109	12,521	17,479	35,417	85,000
0.25	30	893	97	1,869	1,869
0.1	23	271	34	331	720

- Bigger plants are chosen first due to the economy of scale.
- Increasing the feedstock availability, leave some room for smaller plant.

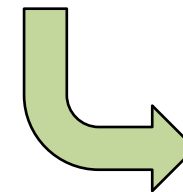
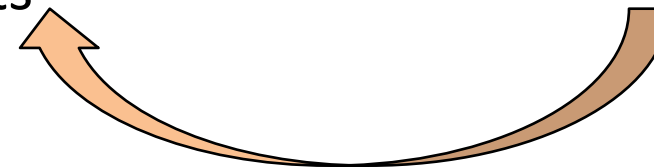
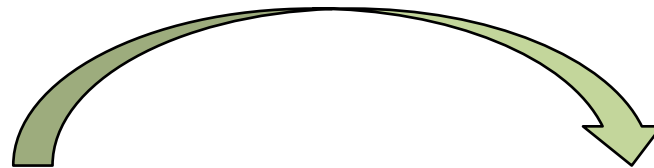
- Plants location, size and technology
- Biomass used
- Costs
- Emissions avoided

BeWhere

Determine the optimal location of plants

LOCAgistics

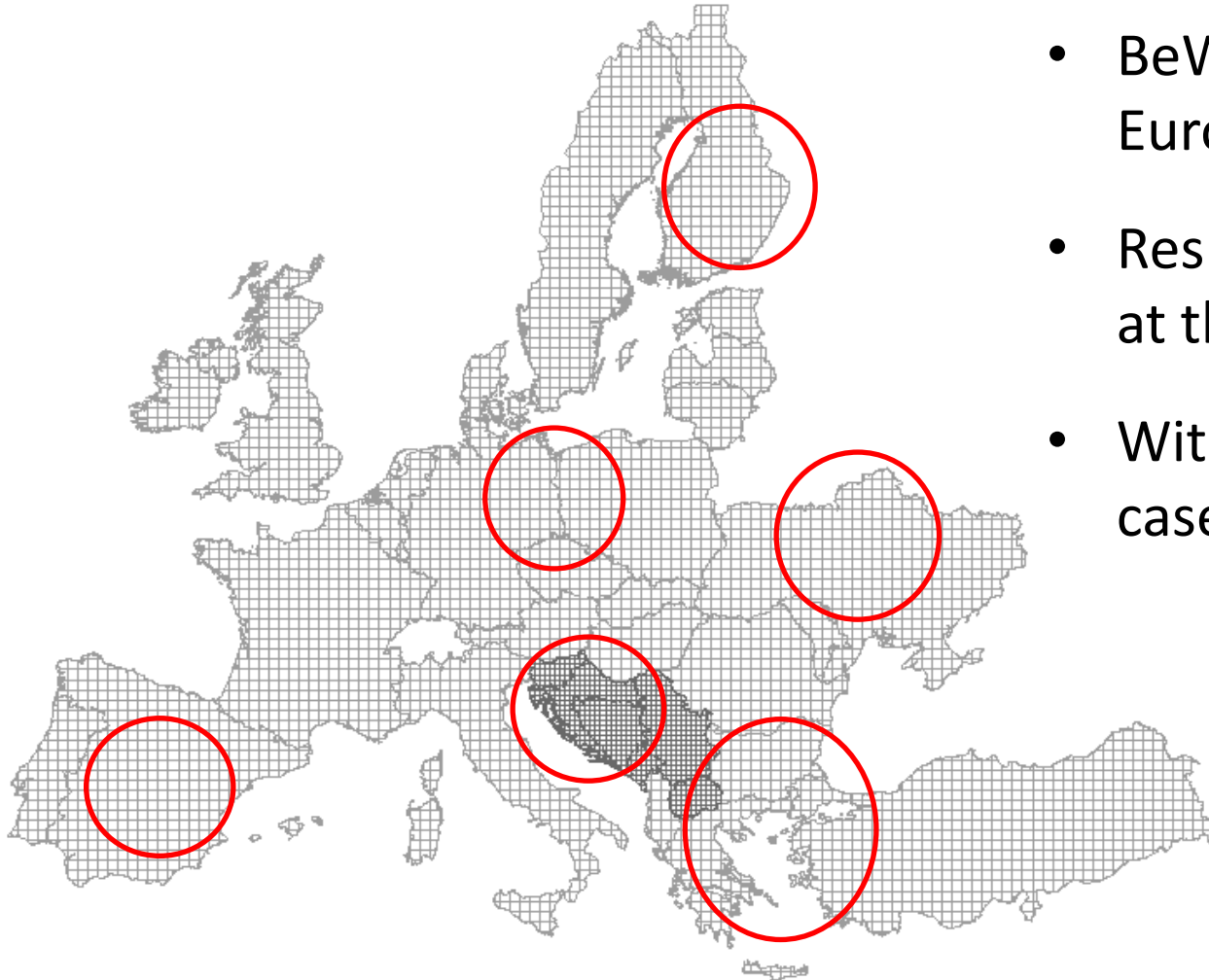
Calculations at the plant level



Quality check!

Final results

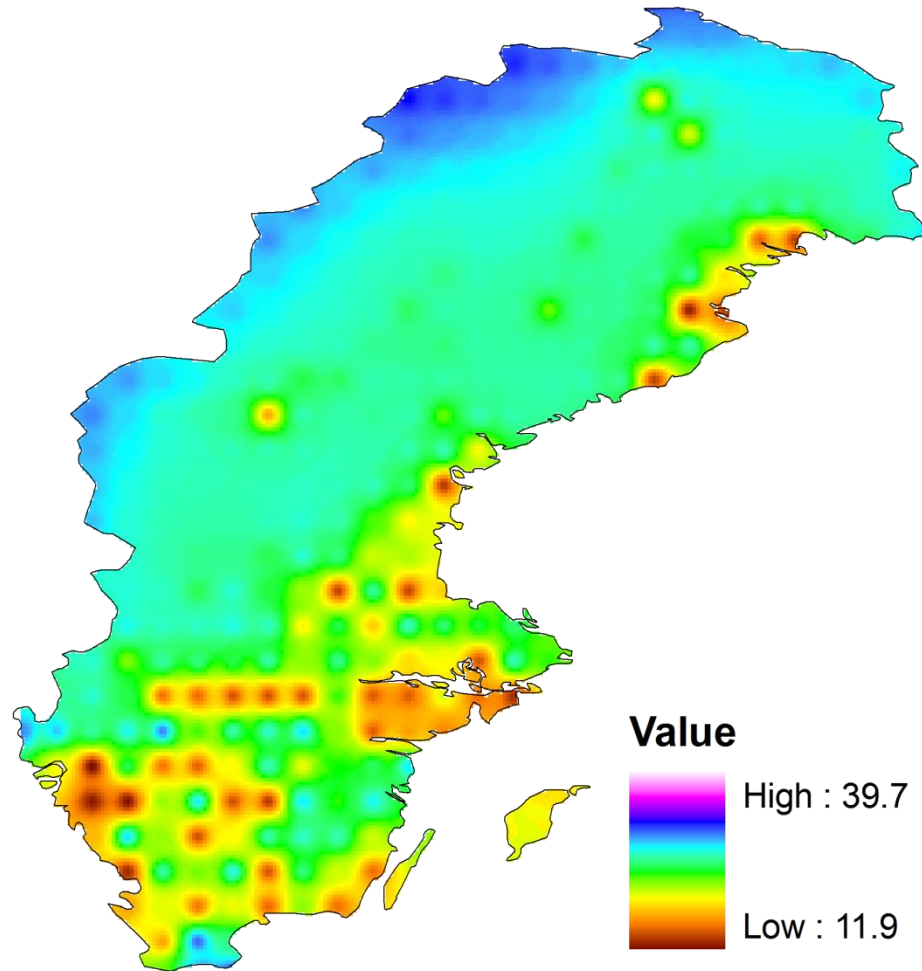
- **BeWhere**
 - National level
 - Geographic location of plant
 - Based on techno-economic approach
- **LOCAgistics**
 - Regional level
 - Input from BeWHere
 - Detailed allocation of biomass to selected plants



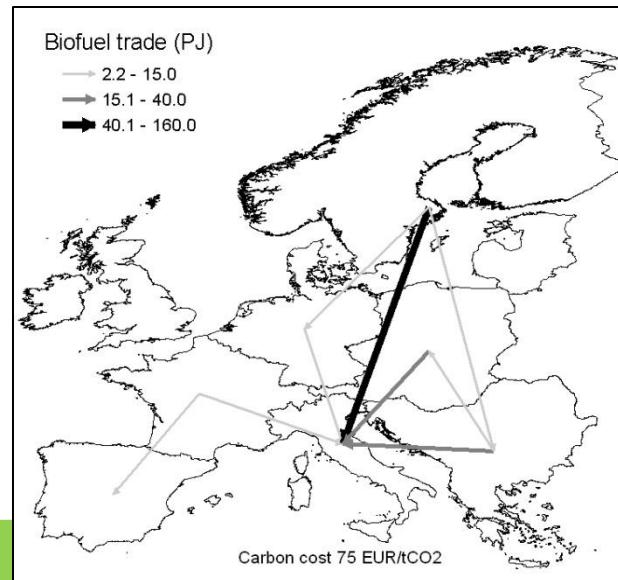
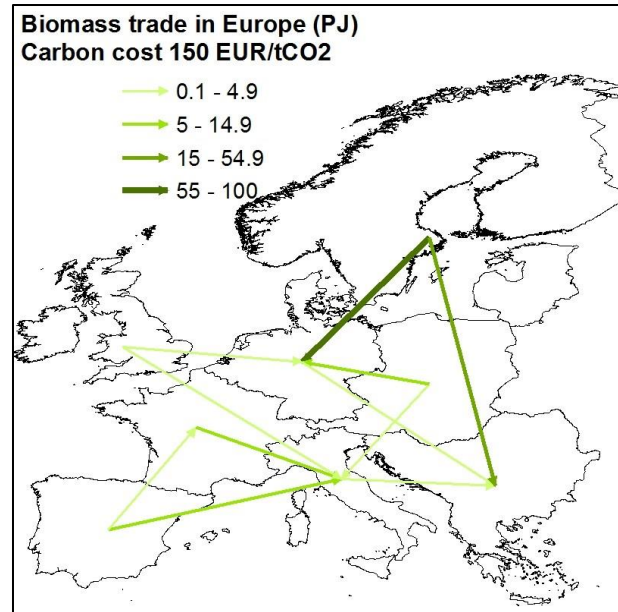
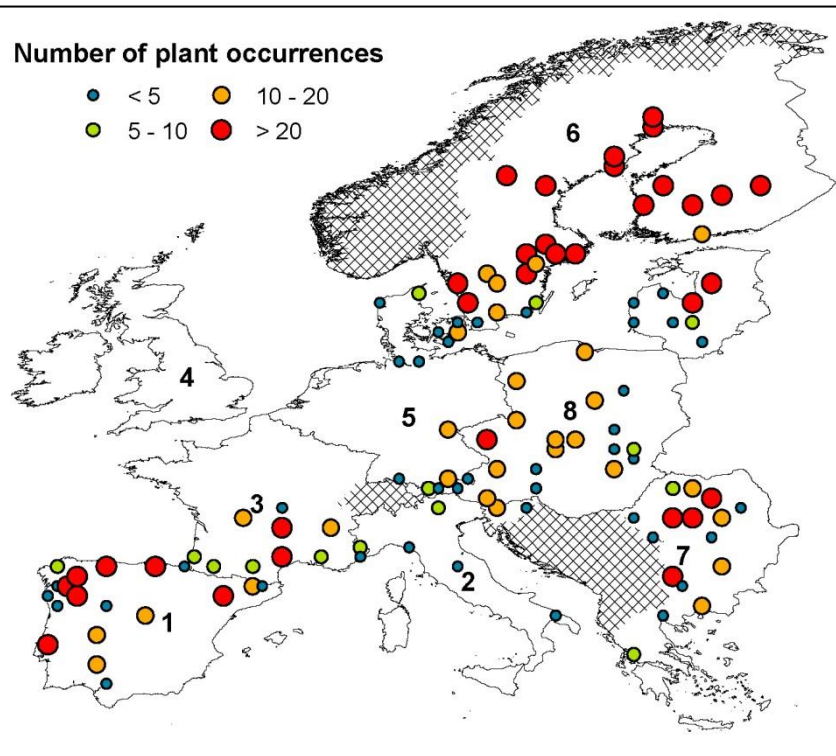
- BeWhere will be run for Europe
- Results will be extracted at the country level
- With a special focus on case studies

Sweden

Ethanol Production Cost (€/GJ)

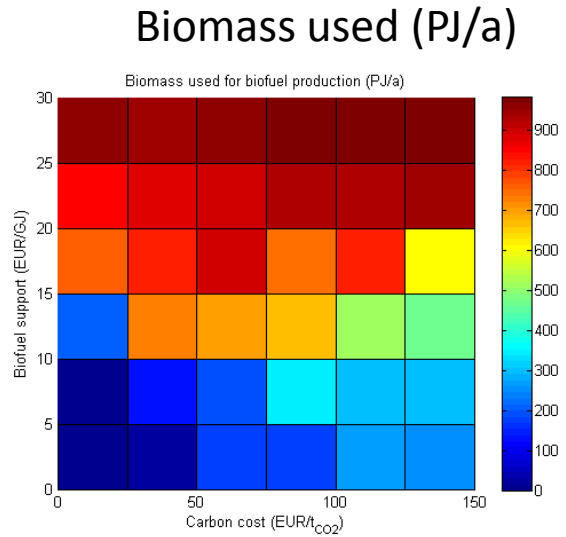


European Model

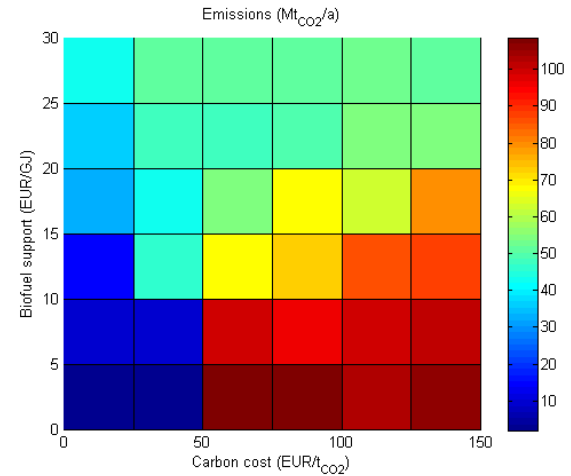


Biofuel Support vs Carbon Cost

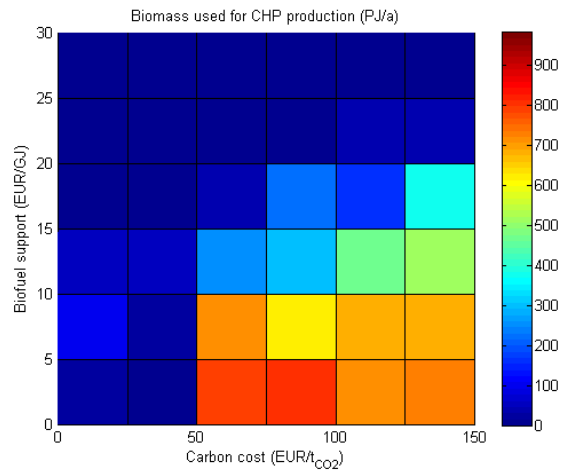
Biofuel



Emissions (Mt_{CO2}/a)



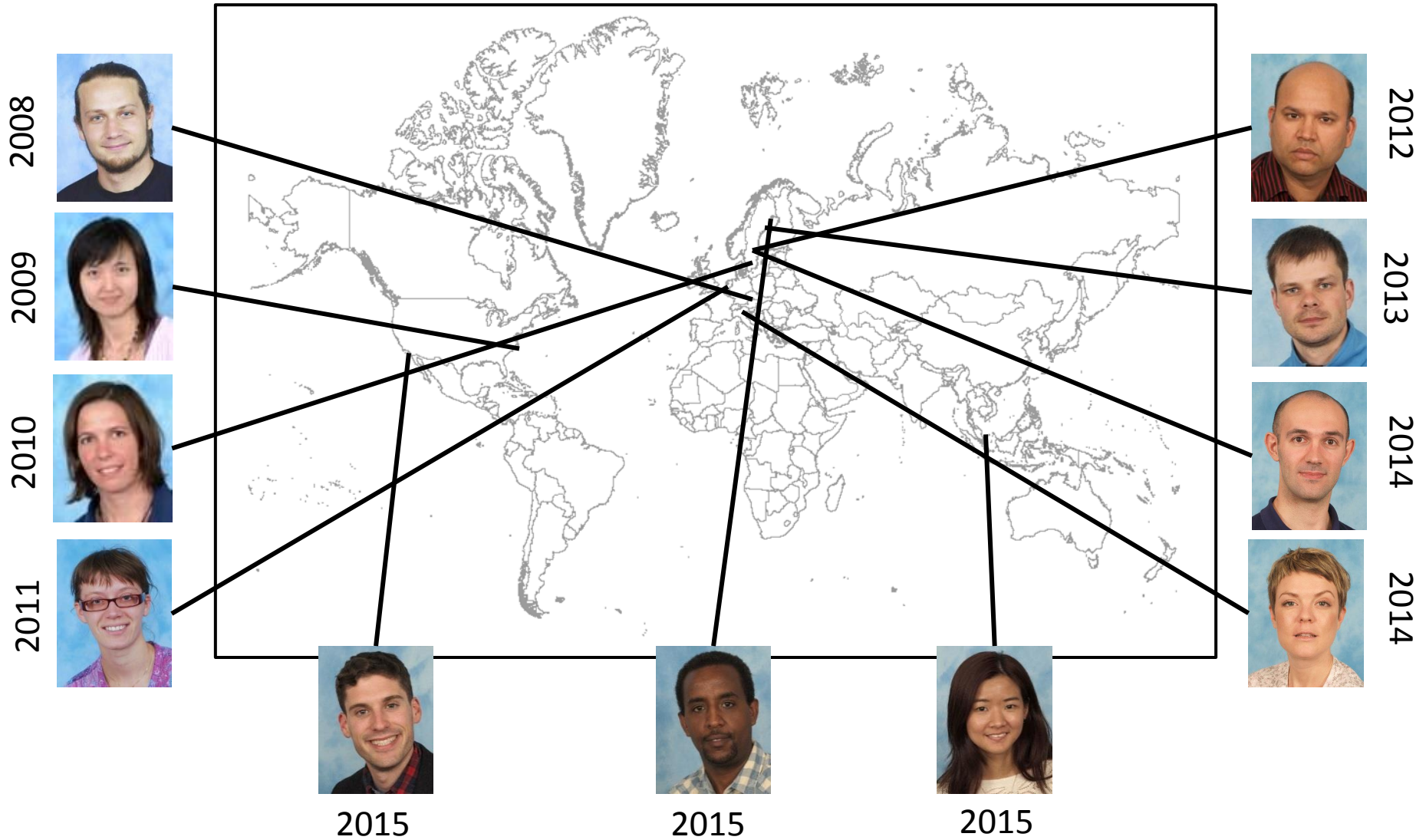
CHP



www.jecami.eu

<http://webarchive.iiasa.ac.at/Research/FOR/bewhere/Results/>

BeWhere and YSSP



Thank you for your attention !!

Sylvain Leduc

leduc@iiasa.ac.at
+43-(0)2236 807 267

More about BeWhere

www.iiasa.ac.at/bewhere

